

AUTOTRONIK

Fertigungssysteme für die **Elektronikindustrie**

AUTOTRONIK-SMT GmbH
Sulzbacher Str. 111
D-92224 Amberg

Tel +49 (0) 9621-600 691
Fax +49 (0) 9621-600 692

office@autotronik-smt.com
www.autotronik-smt.de

MODEL: BA385E2-V SMT-PICK&PLACE MACHINE

- ▶ Perfect for medium & large volume production
- ▶ High Accuracy and high Flexibility from 01005 up to 0.3 mm fine pitch
- ▶ 128 intelligent Auto Tape Feeder w. Quick Scan Function
- ▶ Ballscrews in X-Y direction
- ▶ Up to 6.400 CPH
- ▶ COGNEX Alignment System „Vision On the Fly“
- ▶ Digital Bottom Vision Kamera for fine pitch QFP & BGA
- ▶ Automatic Reference Point Recognition w. digital camera
- ▶ Conveyor System
- ▶ Dispenser System
- ▶ Vision Inspection
- ▶ Universal CAD Conversion
- ▶ Barcode Reader for Feeder setup
- ▶ EtherCAT Bus System



Innovative
Features



Unbeatable
Service



Worldwide
for you!



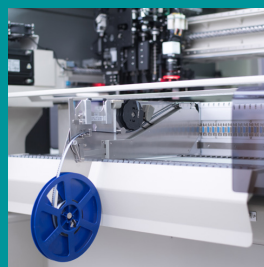
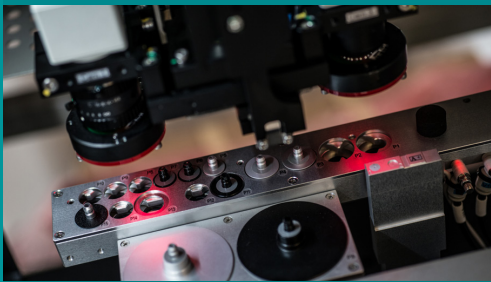
Specialist in small
and medium-sized
manufacturing.



Quality &
innovation at
a fair price.



All from
one hand.



Intelligent feeders in all common sizes. Component spectrum from 01005 to 100x150 mm, component height up to 15mm



Components on tapes, tubes, cut tapes, loose components and trays can be processed.

MODEL: BA385E2-V

SMT-PICK&PLACE MACHINE

SPEZIFICATION:

- Number of Heads (Vision on the Fly): 2
- Placement rate (under optimum condition):
6400 CPH, 5500 CPH (IPC 9850)
- Feeder capacity (8mm): up to 128 Tape Feeders
- IC Tray capacity: up to 2 Waffle Trays
- Component Sense: Vision detection
- Component Size:
 - Handled by digital head camera:
 - smallest: 0.4 x 0.2 mm
 - largest: 16 x 14 mm
 - Handled by fixed digital Bottom Vision Camera:
 - largest: 150 x 100 mm
- Resolution:
 - X/Y Axis: 0.005 mm
 - Z Axis: 0.01 mm
- Rotation: 0° to 360° (0.09°/step)
- Placement Accuracy: +/- 0.03 mm
- X/Y Repeatability: +/- 0.01 mm
- Placement Area without conveyor:
 - without Waffle Tray: 435 x 430 mm
 - with 1 Waffle Tray: 435 x 270 mm
- Placement Area with conveyor:
 - without Waffle Tray: 435 x 460 mm
 - with 1 Waffle Tray: 435 x 310 mm
- Programming:
 - Direct Input
 - Teach-In by digital Camera
 - CAD Access (option)
 - Barcode Reader (optional)
- Industrial PC with Windows 10
- Power Supply: 230VAC
- Power: 2400W
- Pressure: 75 psi (5.5 bar), max. 200L/min
- Machine Size: 1270 x 990 x 1355 mm (L x W x H)
- Weight: 710kg

